



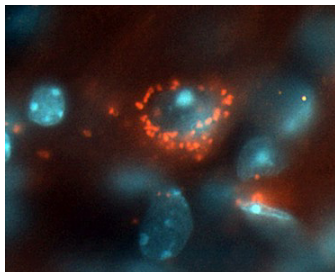
PARKINSON'S DISEASE NEWS

<http://www.viartis.net/parkinsons.disease/news.htm>

30th September 2017 - New research

ALPHA-SYNUCLEIN PREDICTS THE COGNITIVE DECLINE IN PARKINSON'S DISEASE

It is often claimed that alpha-synuclein is a hallmark of Parkinson's Disease or indicates its severity. It has even been wrongly claimed to be the primary cause of Parkinson's Disease. However, it has instead been found to be related to the cognitive decline that can occur in Parkinson's Disease, especially as Parkinson's Disease worsens.



Plasma levels of alpha-synuclein were much higher in people with Parkinson's Disease. However, although there was a significant increase in plasma alpha-synuclein levels in people with Parkinson's Disease, in later stages of Parkinson's Disease there was no correlation with motor symptom severity, as assessed by Unified Parkinson's Disease Rating Scale part III scores (the main Parkinson's Disease symptom score).

However, plasma alpha-synuclein levels were significantly higher in people with Parkinson's Disease who had dementia than in people with Parkinson's Disease who only had mild cognitive impairment or normal cognition.

The results suggest that plasma alpha-synuclein levels correlate with cognitive decline but not with motor severity in people with Parkinson's Disease. Plasma alpha-synuclein could therefore serve as a biomarker for people with Parkinson's Disease at risk of cognitive decline.

Reference : Journal of Neurology, Neurosurgery and Psychiatry [2017] 88 (10) : 818-824 (C.H.Lin, S.Y.Yang, H.E.Horng, C.C.Yang, J.J.Chieh, H.H.Chen, B.H.Liu, M.J.Chiu)

Complete abstract : <http://www.ncbi.nlm.nih.gov/pubmed/28550072>

<http://www.viartis.net/parkinsons.disease/news/170930.pdf>

mail@viartis.net

©2017 Viartis